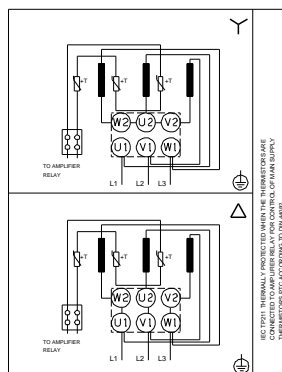
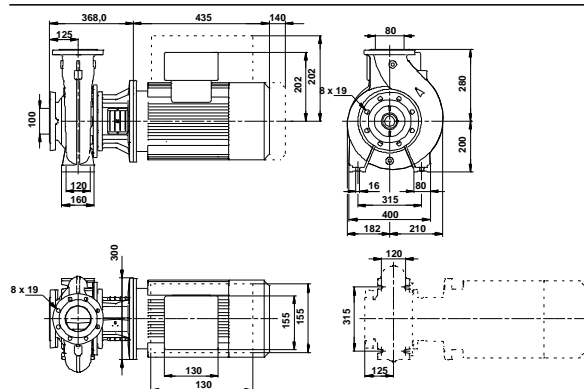
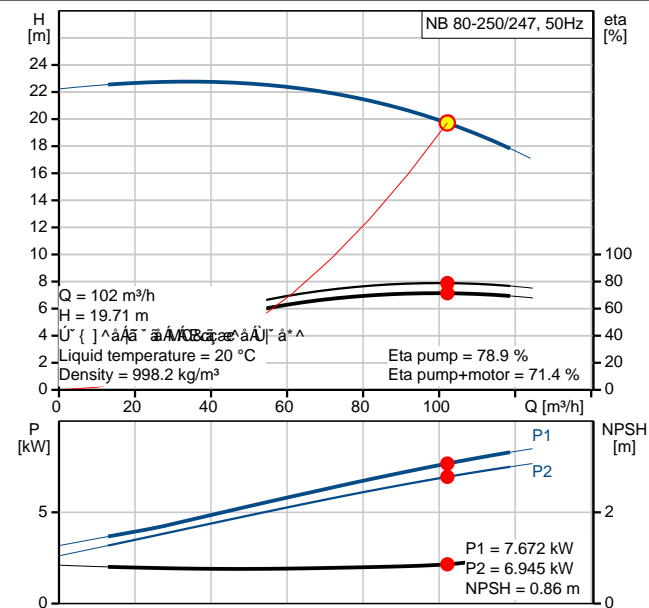


Description	Value
General information:	
Product name:	BOA 80-250/247
Product No:	98837245
Position:	
EAN number:	5712602142365
Price:	
Technical:	
Speed for pump data:	1465 rpm
Actual calculated flow:	102 m³/h
Resulting head of the pump:	19.71 m
Actual impeller diameter:	247 mm
Impeller nom:	250 mm
Primary shaft:	BQQV
Secondary shaft seal:	NONE
Shaft diameter:	32 mm
Curve tolerance:	ISO9906:2012 3B
Pump version:	A
Materials:	
Pump housing:	Stainless steel DIN W.-Nr. 1.4408 ASTM CF8M
Impeller:	Stainless steel DIN W.-Nr. 1.4408 ASTM CF8M
Material code:	p
Installation:	
Maximum ambient temperature:	55 °C
Maximum operating pressure:	16 bar
Flange standard:	EN 1092-2
Connect code:	F2
Pump inlet:	DN 100
Pump outlet:	DN 80
Pressure stage:	PN 16
Wear ring(s):	neckring(s)
Liquid:	
Pumped liquid:	Activated Sludge
Liquid temperature range:	-10 .. 90 °C
Liquid temp:	20 °C
Density:	998.2 kg/m³
Electrical data:	
Motor type:	SIEMENS
IE Efficiency class:	IE3
Number of poles:	4
Rated power - P2:	7.5 kW
Mains frequency:	50 Hz
Rated voltage:	3 x 380-420D/660-725Y V
Rated current:	15,0-13,6/8,70-7,90 A
Starting current:	820-820 %
Cos phi - power factor:	0,84
Rated speed:	1465 rpm
Efficiency:	IE3 90,4%
Motor efficiency at full load:	90,4-90,4 %
Motor efficiency at 3/4 load:	90,8-90,8 %
Motor efficiency at 1/2 load:	90,2-90,2 %





Company name:

Created by:

Phone:

Date:

11/13/2015

Description	Value
Enclosure class (IEC 34-5)::	55 (Protect. water jets/dust)
Insulation class (IEC 85):	F
Motor protec:	PTC
Motor No:	83V15222
Mount. design. acc. IEC 34-7:	IM V1/B5
Lubricant type:	Grease
Others:	
Minimum efficiency index, MEI :	0.70
ErP status:	EuP Standalone/Prod.
Net weight:	194 kg
Gross weight:	203 kg
Shipping volume:	0.518 m ³



Company name:

Created by:

Phone:

Date:

11/13/2015