

TECHNICAL DATA

CONTRACT REFERENCE NO.	2220
BUCKET SPACING (mm)	350
DRIVE WHEEL (mm)	790
FLANGE RADIUS (mm)	790
FLANGE THICKNESS (mm)	10
CONCRETE CAPACITY (t)	170
VELOCITY (mm/s)	170
MATERIAL (t)	170

DRIVE DATA

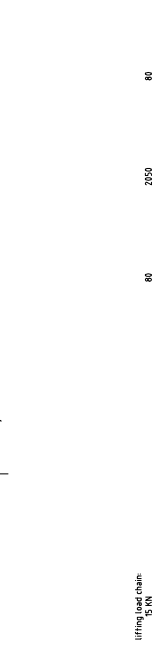
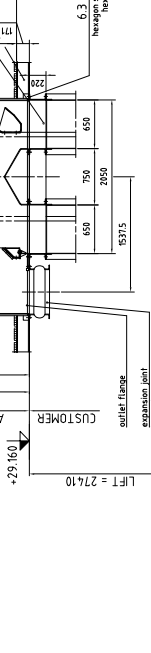
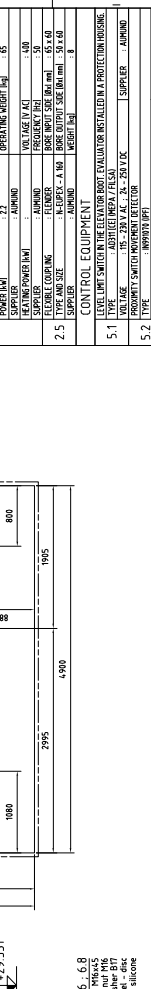
DRIVE SHAFT CAPACITY (t)	44.25 (100% of max)
AC MOTOR	IEC
SHAFT SIZE (mm)	55
SHAFT MATERIAL	40R
CAPACITY (t)	55
TYPE OF PROTECTION	IP65
WEIGHT (kg)	390
NET WEIGHT (kg)	390
TYPE OF PROTECTION	IP65
WEIGHT (kg)	390
NET WEIGHT (kg)	390
TYPE OF PROTECTION	IP65
WEIGHT (kg)	390
NET WEIGHT (kg)	390

CONTROL EQUIPMENT

5.1 TYPE	LEVEL SWITCH ON THE ELEVATOR BOOM EVALUATOR INSTALLED IN A PROTECTION HOUSING
VOLTAJE	20 - 250 V A.C. DC
5.2 TYPE	STOP INDICATOR IN THE ELEVATOR BOOM
VOLTAJE	20 - 250 V A.C. DC
5.3 TYPE	STOP INDICATOR IN THE ELEVATOR BOOM
VOLTAJE	20 - 250 V A.C. DC
5.4 TYPE	STOP INDICATOR IN THE ELEVATOR BOOM
VOLTAJE	20 - 250 V A.C. DC

LEVEL SWITCH ON THE ELEVATOR BOOM EVALUATOR INSTALLED IN A PROTECTION HOUSING

5.1 TYPE	LEVEL SWITCH ON THE ELEVATOR BOOM EVALUATOR INSTALLED IN A PROTECTION HOUSING
VOLTAJE	20 - 250 V A.C. DC
5.2 TYPE	STOP INDICATOR IN THE ELEVATOR BOOM
VOLTAJE	20 - 250 V A.C. DC
5.3 TYPE	STOP INDICATOR IN THE ELEVATOR BOOM
VOLTAJE	20 - 250 V A.C. DC
5.4 TYPE	STOP INDICATOR IN THE ELEVATOR BOOM
VOLTAJE	20 - 250 V A.C. DC

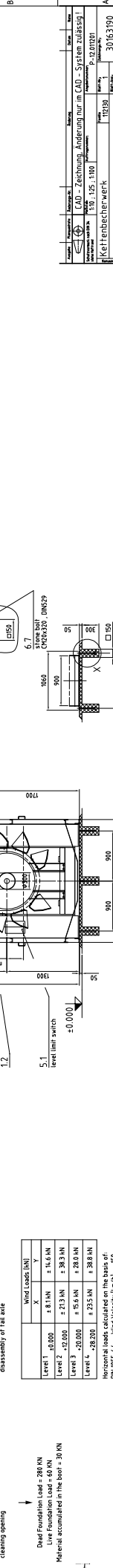
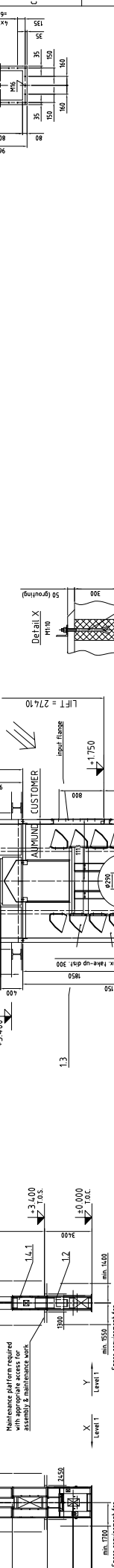
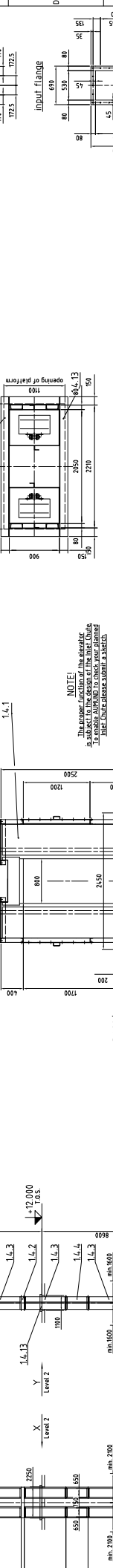
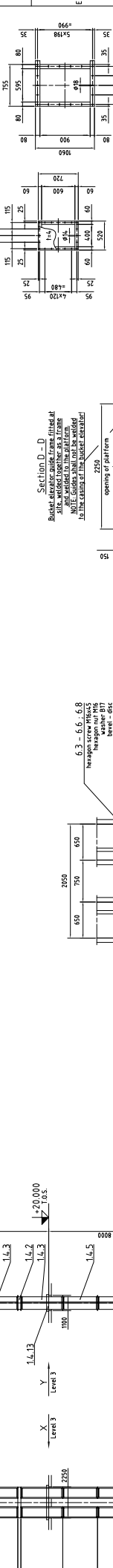


WIND LOADS (kN)

Level	X	Y
Level 1	± 0.000	± 61.14N
Level 2	± 0.000	± 213.0N
Level 3	± 20.000	± 156.6N
Level 4	± 20.000	± 225.0N

FOUNDATION LOADS (kN)

Dead Foundation Load	280 KN
Live Foundation Load	60 KN
Material accumulated in the bowl	30 KN



Customer Name		customer
Project Name		Customer
Project Ref.		2220
Drawing No.		2220-01
Drawing Date		2020-01-20
Drawing Scale		1:1
Drawing Title		chim bucket elevator
Drawing Author		30163100
Drawing Checker		
Drawing Approver		
Drawing Status		