

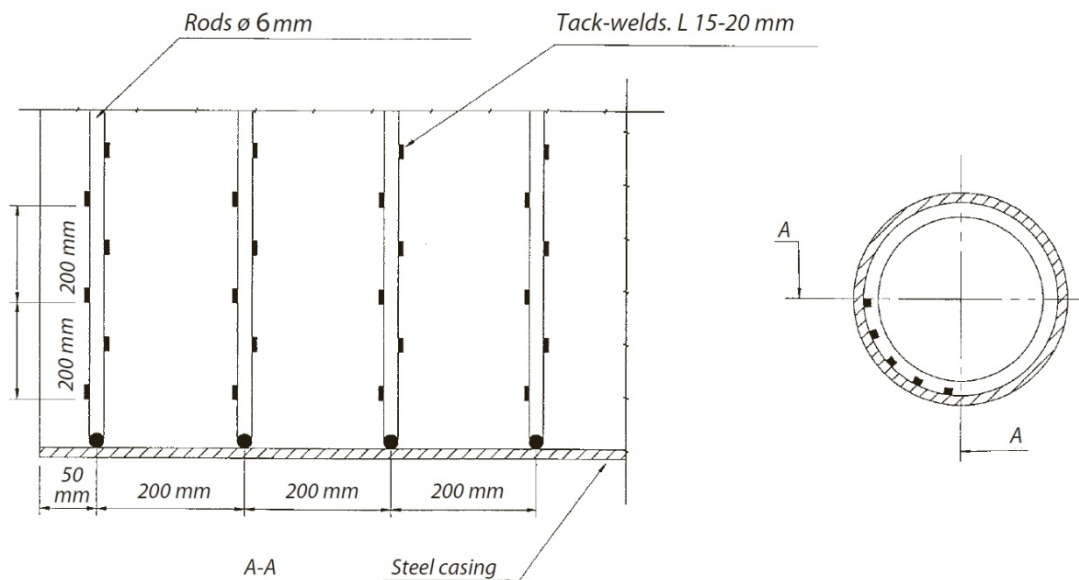
## 1. Rods installation

**Warning:** Round supplied from 30mm of DENSIT or on indication from PA Technologies.  
Do not consider this step if no round is provided.

- Cut the stems to the appropriate lengths. The rods must be able to be welded to the retaining plates
- Place the rods every 200mm approximately.
- Welds should be done at approximately 200mm intervals.

### **Zig-zag welding**

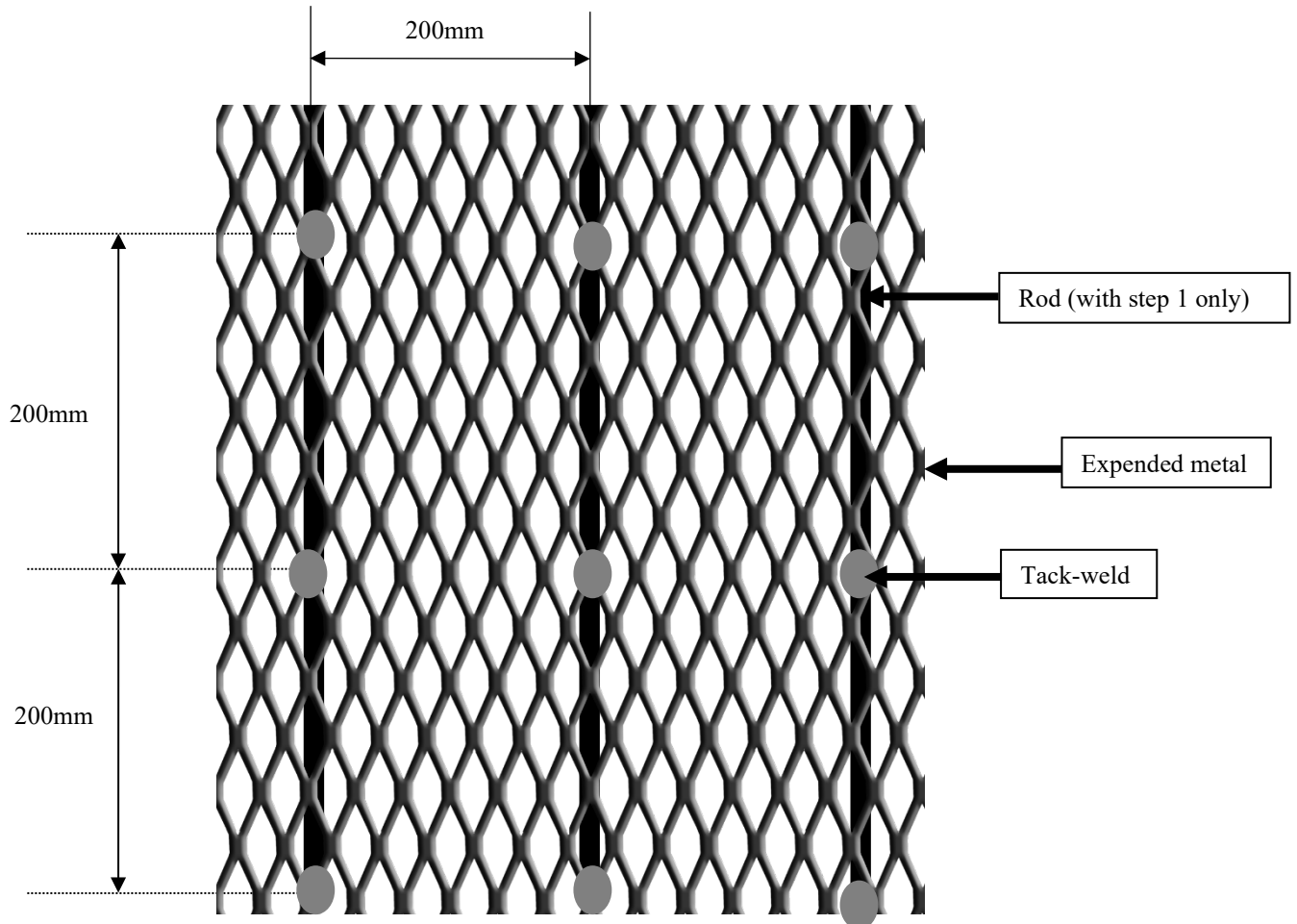
For constructions on curved surfaces, the rods should be placed to perfectly match the shape.



*Installation sketch*

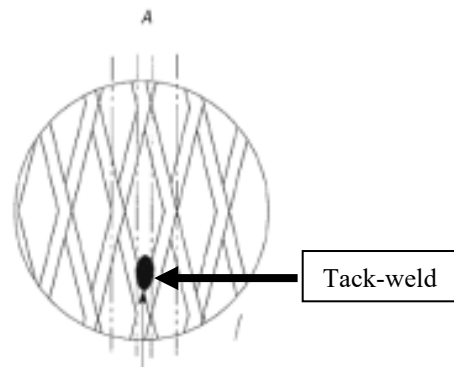
## 2. Steel mesh installation

- Carefully adjust the expanded metal to the dimensions of the target area.
- The large diagonal of the stitches should be parallel to the axis of the casing.
- Weld the meshes on the casing with an interval of 200-250mm between the welds.



*Explanation sketch for expanded metal*

Weld at the bottom of the ribs

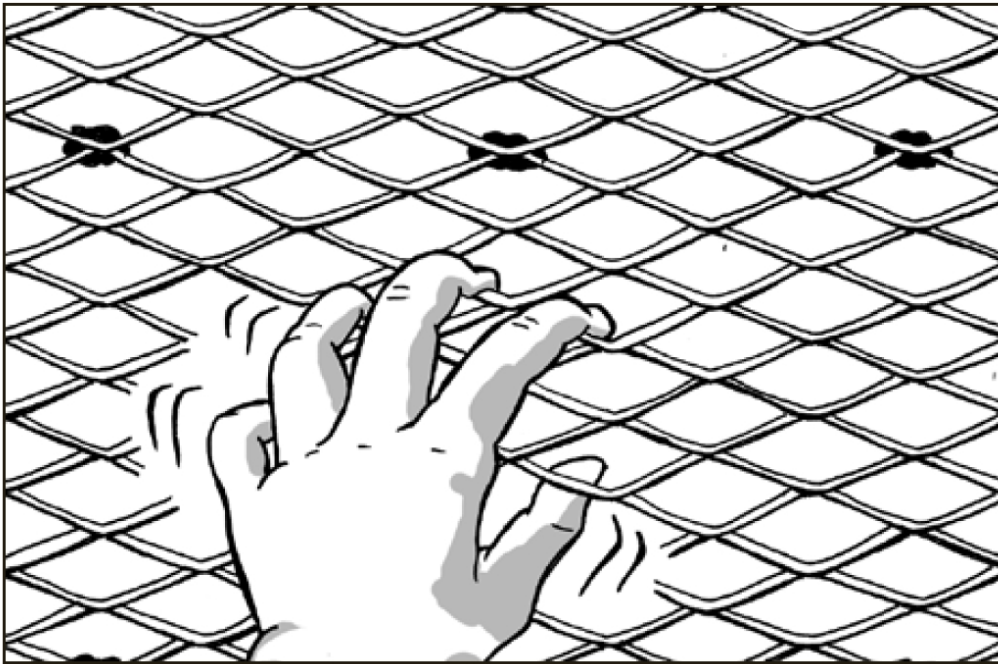


### 3. Quality check

#### **Checking the stiffness of the anchoring**

Then anchoring must be so firmly attached to the fabrication that the mesh does not move when the compound is applied. Make certain the anchoring is properly welded onto the fabrication by pulling on it.

The anchoring must not be loose, and it must not be possible to pull it away from the fabrication.



*Non contractual picture*

### 4. Bonding compound application

**Warning:** Product supply for high temperature application or on indication from PA Technologies. Do not consider this step if no round is provided.

Tools: pneumatic pistol provided

Apply the Bonding compound on Steel Mesh.

It is important that all surface of Steel mesh is covered with Bonding Compound