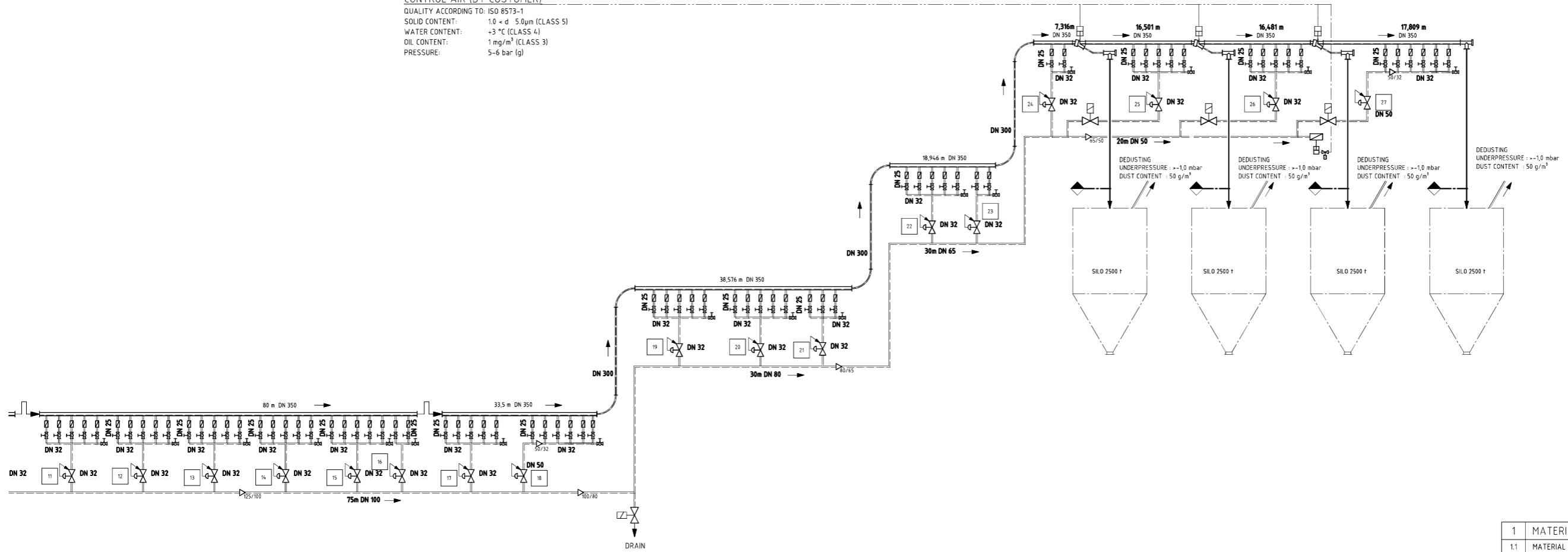


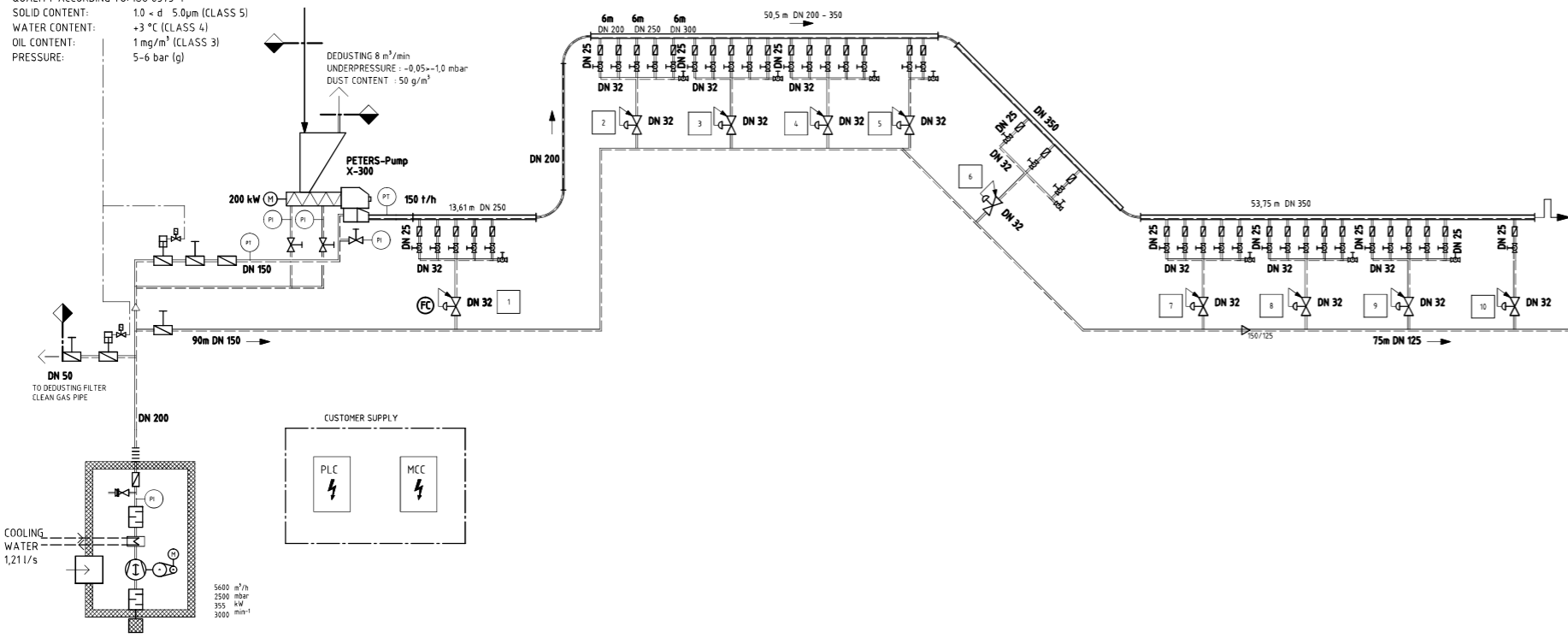
CONTROL AIR (BY CUSTOMER)

QUALITY ACCORDING TO: ISO 8573-1
 SOLID CONTENT: 1.0 - d 5.0µm (CLASS 5)
 WATER CONTENT: +3 °C (CLASS 4)
 OIL CONTENT: 1 mg/m³ (CLASS 3)
 PRESSURE: 5-6 bar (g)



CONTROL AIR (BY CUSTOMER)

QUALITY ACCORDING TO: ISO 8573-1
 SOLID CONTENT: 1.0 - d 5.0µm (CLASS 5)
 WATER CONTENT: +3 °C (CLASS 4)
 OIL CONTENT: 1 mg/m³ (CLASS 3)
 PRESSURE: 5-6 bar (g)



1 MATERIAL DATA	
1.1 MATERIAL	CEMENT
1.2 RESIDUE ON 90 µm	3 %
1.3 AVERAGE GRAIN SIZE	0,012 mm
1.4 MAXIMUM GRAIN SIZE	0,5 mm
1.5 BULK DENSITY ACC. TO DIN EN 459-2	1150 kg/m³
1.6 PARTICLE DENSITY	3200 kg/m³
1.7 BULK DENSITY (AT FEEDING POINT)	800 kg/m³
1.8 MAX. SPECIFIC SURFACE (BLAINE)	3900 cm²/g
1.9 MIN. SPECIFIC SURFACE (BLAINE)	2920 cm²/g
1.10 MOISTURE CONTENT	0,5 %H2O
1.11 MATERIAL TEMPERATURE	100 °C
1.12 SPECIAL MATERIAL CHARACTERISTICS	NONE

2 MAIN CONVEYING DATA	
2.1 CONVEYING CAPACITY (NOMINAL/MAXIMAL)	150/170 t/h
2.2 TOTAL LENGTH OF CONVEYING DISTANCE	388 m
2.3 INCL. VERTICAL HEIGHT	36,6 m
2.4 NO. OF 90° BENDS / VALVES	13
2.5 OUTER DIAMETER OF PIPELINE	355,6 mm
2.6 THICKNESS OF PIPELINE	8 mm
2.7 CONTROLLED FEEDING IN FRONT OF PUMP?	BY SCREW FEEDER
2.8 PRESSURE OF RECEIVING POINT	NO bar (g)

BATTERY LIMIT CUSTOMER

**ENDGÜLTIG
FINAL**
08.02.2013

CODE: CEMENTOWNIA ODR
 PROJ.-NO.: 02-1/191.162/612

REVISIONS		REVISIONS		REVISIONS	
NO.	DATE	DESCRIPTION	BY	DATE	DESCRIPTION
01	19.02.12	INITIAL DESIGN			
02	08.02.13	MODIFICATION			
03	19.02.12	MODIFICATION			

Fabriknummer: 191.162/612
 Abmessung: 1000 x 1000 mm
 Zeichnungsart: PUMP X-300 WITH FLUIDCON CONVEYING
 Projekt: 02-1/191.162/612
 Blatt: 1 von 1
 Datum: 08.02.2013
 Zeichner: [Name]
 Gepr. / Gepr. Datum: [Name] / [Date]
 Gepr. / Gepr. Datum: [Name] / [Date]

OLAUDIUS PETERS
 FLOWSHEET
 PUMP X-300 WITH FLUIDCON CONVEYING
 02-1/191.162-100/E-02