

Zad. 4 - brzoza ul. Bat. Chłopskich - ośm. wydzielenie



Bat. Chłopskich.

Diamantowa

2-422

2-421/1

2-398

2-394/5

2-394/6

2-395/2

2-421/2



2-394/8

2-394/7



2-424

2-423/1

2-423/2

2-394/3



2-396



2-425



2-394/1



2-394/2



2-89/5

2-90/6



Bat. Chłopskich.

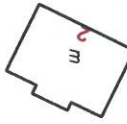
2-427/3

2-427/5

2-427/1



2-429/2



2-429/1



2-89/6

2-87K

2-500

2-547

2-493/1

2-497

2-430

2-496