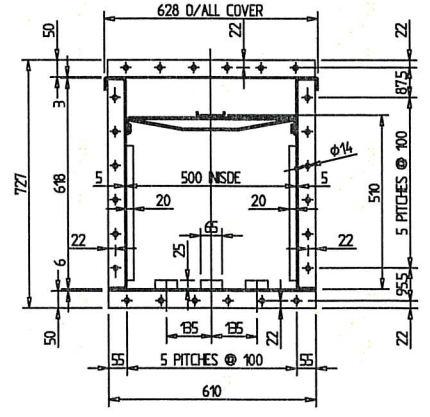
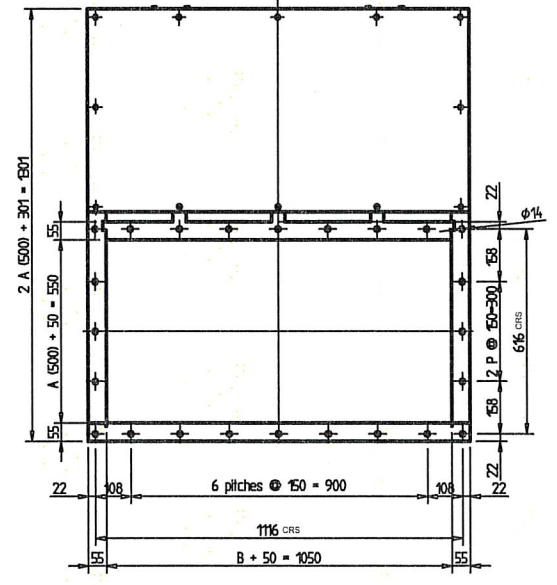
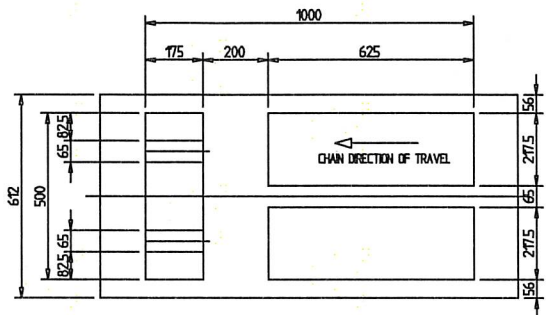
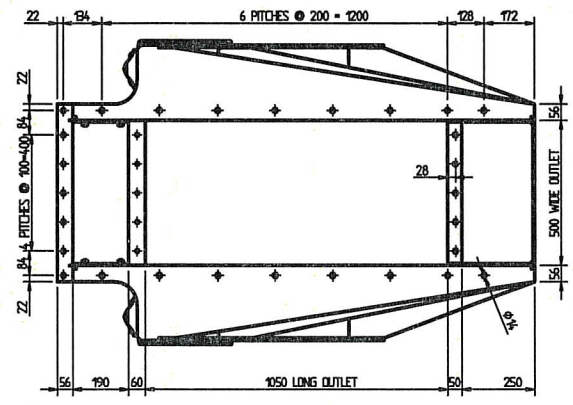
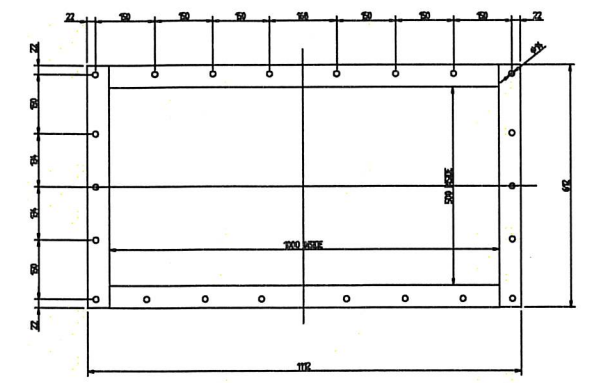
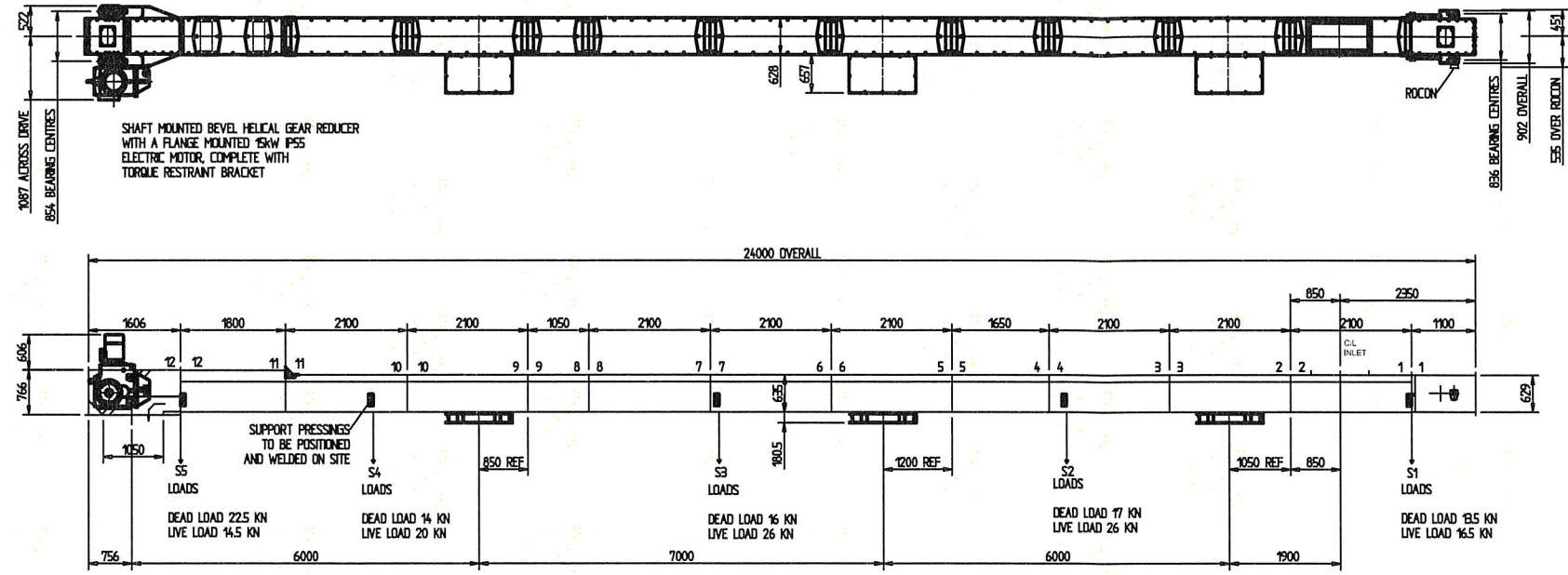




APPROVED	LETTER	REVISION	SKG.	DATE
	A	ORIGINAL ISSUE FOR CLIENT APPROVAL	MH	18.08.10
	B	TENSION END & OVERALL LENGTH UPDATED	MH	31.08.10
	C	GA FINALISED, PART NO'S & WEIGHTS ADDED	MH	09.09.10



204	1	SERIES 6 RoCoN UNIT	0045/2080/01	1
203		M12 HEX NUT	NHM/12/80ZC	307
202		M12 x 30 LG HEX SETSCREW	SHM/12030/88ZC	307
201		MACHINE LABEL	0091/0226	10
200		NAME PLATE	0091/0221	1

100	34kg/m	BASIC CHAIN 3122 (HEAVY DUTY DIGGING)	3X1/055400/4B	228
-----	--------	---------------------------------------	---------------	-----

20	10	SUPPORT PRESSING	0260/6045	8
19	172	OUTLET SLIDE	0254/2022	3
18	10	ADAPTOR FLANGE	0034/8666	1
17	7	BUTT STRAP (TO MATCH T/E)	0034/7664	1
16	12	BUTT STRAP	0034/8665	9
15	3049	DRIVE DETAILS	0036/9087	1
14	162	DRIVING END SHAFT	0024/5897	1
13	747	DRIVING END ASSEMBLY (φ125 BRGS)	4055/031/5.11.100	1
12	546	CASING SECTION (ADAPTOR 1800 LONG) 11-12	4055/031/3.02.100	1
11	588	CASING SECTION (2100 LONG) 10-11	4055/031/2.11.101	1
10	561	CASING SECTION (OUTLET 2100 LONG) 9-10	4055/031/2.11.104	1
9	298	CASING SECTION (1050 LONG) 8-9	4055/031/2.11.106	1
8	588	CASING SECTION (2100 LONG) 7-8	4055/031/2.11.101	1
7	588	CASING SECTION (2100 LONG) 6-7	4055/031/2.11.101	1
6	563	CASING SECTION (OUTLET 2100 LONG) 5-6	4055/031/2.11.103	1
5	463	CASING SECTION (1650 LONG) 4-5	4055/031/2.11.107	1
4	588	CASING SECTION (2100 LONG) 3-4	4055/031/2.11.101	1
3	562	CASING SECTION (OUTLET 2100 LONG) 2-3	4055/031/2.11.102	1
2	593	CASING SECTION (INLET 2100 LONG) 1-2	4055/031/2.11.105	1
1	550	TENSION END ASSEMBLY (φ90 BRGS)	4055/031/1.11.100	1
ITEM	WEIGHT (kg) EACH	DESCRIPTION	DRAWING No.	No. OFF

TENSION END TO HAVE SCANDURA SEAL UNDER SLIDEPLATE

PAINTING :-
 DEGREASE AND PAINT EXTERNAL SURFACES SYSTEM 1 COLOUR RAL 5018 DEPTH 75 MICRONS.
 CHAIN AND MACHINE INTERNAL SURFACES TO BE FINISHED IN BLACK CONVERSION COATING SYSTEM A

NON-STANDARD FEATURES

REDLER BASIC INFORMATION

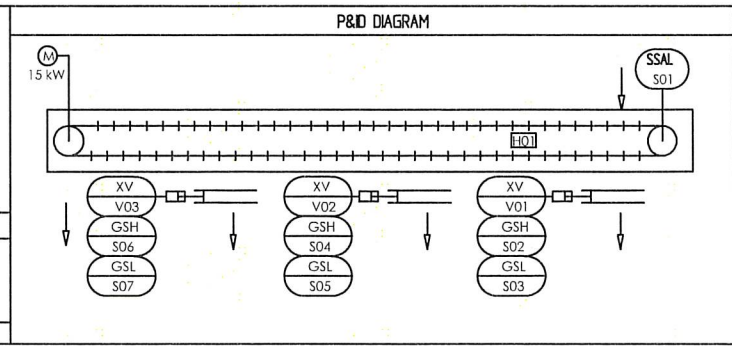
MACHINE FINISHES TO BE IN ACCORDANCE WITH ND/PA AND AS DETAILED IN THE NON STANDARD FEATURES BOX. WELDING TO BE IN ACCORDANCE WITH ND/WA AND AS DETAILED ON THIS AND RELATED DRAWINGS. MATERIAL TO BE IN ACCORDANCE WITH ND/NA AND/OR AS DETAILED ON THIS AND RELATED DRAWINGS.

STROUD, GLOUCESTERSHIRE, GL5 3EY, ENGLAND

THIS DRAWING IS COPYRIGHT AND MUST NOT BE COPIED OR DISCLOSED TO THIRD PARTIES EXCEPT ON THE WRITTEN ORDER OF REDLER Limited. IT REMAINS THE PROPERTY OF REDLER Limited AND IS SUBJECT TO THEIR RECALL.

ORIGINAL FRAME SIZE 555mm x 777.5mm

© REDLER Limited 2010



MACHINE MARK	MACHINE NUMBER	MACHINE TYPE	MATERIAL SIZE mm AND LOOSE BULK DENSITY kg/m ³	CAPACITY AT RATE OF m ³ /h tonne/h	CHAIN SPEED m/s pitches/min	SPROCKET SHAFT SPEED rev/min	GEARED MOTOR OUTPUT rev/min	EST. POWER ABS. AT SPROCKET SHAFT kW	MOTOR kW	SHEAR PIN DETAILS	
C1	480021	CE4055	CEMENT CLINKER SLAG & GYPSUM @ 1100-1400	160 MAX	0.2	9.6		10.65	15		
		ATEX: SAFE UN-ZONED									

T:\AUTOCAD\CONT\

DRAWN MH DATE 12/08/10 APPROVED KCARTER 10/09/10

SCALE 1:50 TD 113046

REDLER CLIENT

Schenck Process Polska Sp z.o.o. (Odra Cement Works)

DRG. No. G.A. 480020-01 SHEET 1 OF 1 SHEETS

ISSUE C